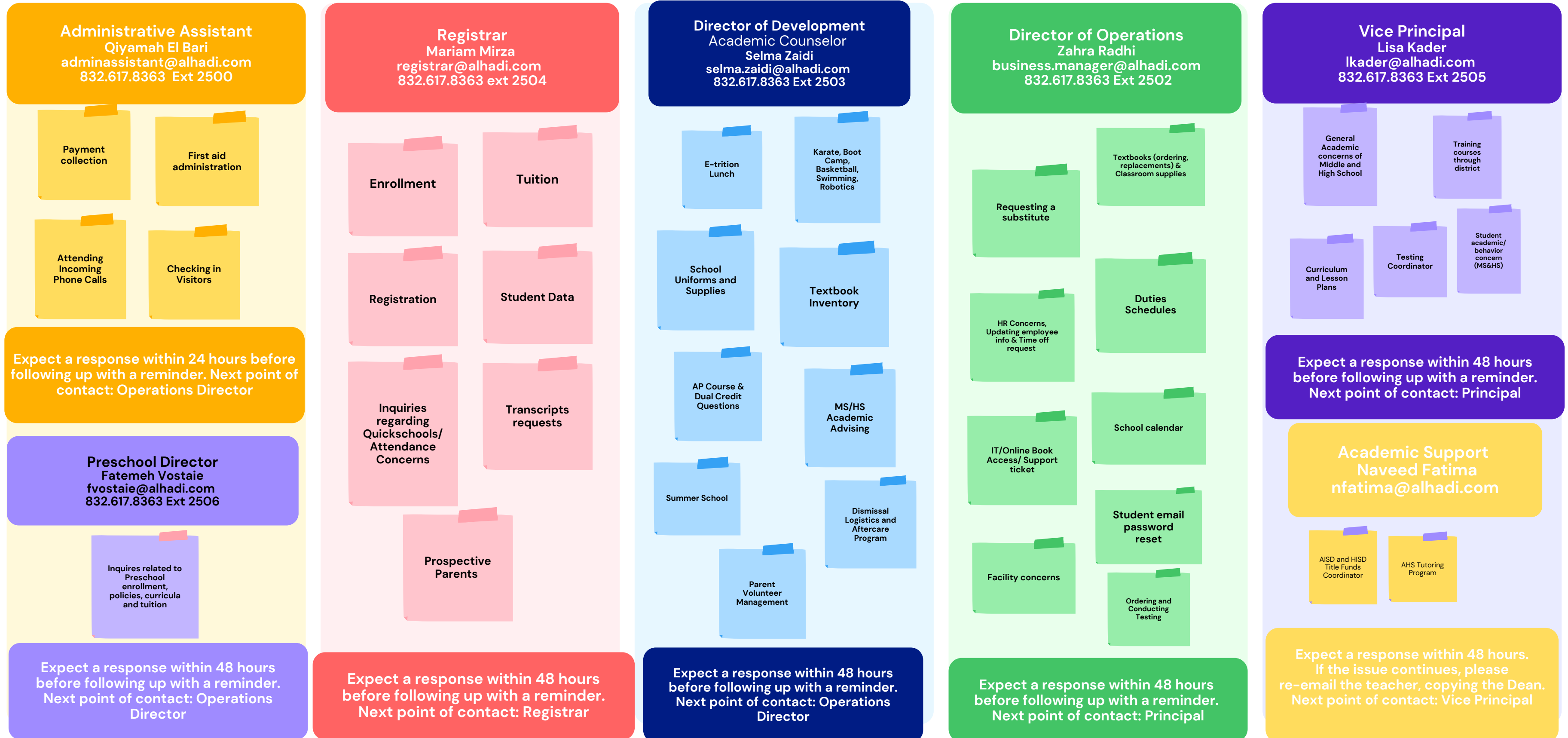


Al-Hadi's Parent Communication Roadmap

We encourage open lines of communication with our parents. If you have any questions or concerns, please reach out to the appropriate person responsible.



Expect a response within 24 hours before following up with a reminder. Next point of contact: Operations Director

Preschool Director
Fatemeh Vostaie
fvostaie@alhadi.com
832.617.8363 Ext 2506

Inquires related to
Preschool
enrollment,
policies, curricula
and tuition

Expect a response within 48 hours before following up with a reminder. Next point of contact: Operations Director

Expect a response within 48 hours before following up with a reminder. Next point of contact: Registrar

Expect a response within 48 hours before following up with a reminder. Next point of contact: Operations Director

Expect a response within 48 hours before following up with a reminder. Next point of contact: Principal

Expect a response within 48 hours before following up with a reminder. Next point of contact: Principal

Academic Support
Naveed Fatima
nfatima@alhadi.com

AISD and HISD
Title Funds
Coordinator

AHS Tutoring
Program

Expect a response within 48 hours. If the issue continues, please re-email the teacher, copying the Dean. Next point of contact: Vice Principal

Al-Hadi's Parent Communication Roadmap

We encourage open lines of communication with our parents. If you have any questions or concerns, please reach out to the appropriate person responsible.

<p>Student Life Coordinator Siddiqua Shahnawaz sshahnawaz@alhadi.com 832.617.8363 ext 2504</p> <p>Parent Communication</p> <p>School website and social media pages</p> <p>Staff Appreciation Week</p> <p>School Field Trips, Science Fair, Book Fair</p> <p>PSIA, Future City and Afterschool Clubs</p> <p>School Program Block</p> <p>Graduation, NHS Induction, Academic Excellence Awards StuCo</p> <p>Picture Day</p> <p>Expect a response within 48 hours before following up with a reminder. Next point of contact: Operations Director</p>	<p>Lead / Subject Teachers Please check the Al-Hadi website for contact information. Please use only Al-Hadi communication channels and refrain from using personal emails or phone numbers of the teachers.</p> <p>All student-specific classroom communication</p> <p>Student's attendance</p> <p>Grading concerns</p> <p>Homework</p> <p>Expect a response within 48 hours. If the issue continues, please re-email the teacher, copying the Dean. Next point of contact: Vice Principal</p>	<p>Dean of Elementary Sawsan Tawil stawil@alhadi.com</p> <p>General concerns of Elementary</p> <p>Student academic / behavior concerns (Elementary students)</p> <p>Questions about weekly calendars</p> <p>Curriculum and Lesson Plans</p> <p>Expect a response within 48 hours. If the issue continues, please re-email the teacher copying the Dean. Next point of contact: Vice Principal</p>	<p>Apex Coordinator Siddeeqa Kanani skanani@alhadi.com</p> <p>Grading</p> <p>APEX assignment submissions</p> <p>APEX Testing</p> <p>Expect a response within 48 hours before following up with a reminder. Next point of contact: Academic Counselor</p> <p>PTO Representatives</p> <p>Grade representatives will be available to consolidate, communicate and advocate on the general concerns that parents have. We encourage parents to reach out to the grade rep for general concerns.</p>	<p>Parent Teacher Organization</p> <p>President: Dureyakta Mirza - president.pto@alhadi.com</p> <p>Vice President: Zainab Kakli - vicepresident.pto@alhadi.com (Representative for grades: KG, 1, 2)</p> <p>Secretary: Nazish Salim - secretary.pto@alhadi.com (Representative for grades: 6, 7, 8, 9)</p> <p>Officer: Madiha Mirza - ptorep1@alhadi.com (Representative for Preschool)</p> <p>Officer: Maria Gokal - ptorep2@alhadi.com</p> <p>Officer: Rida Haider - ptorep3@alhadi.com (Representative for grades: 3, 4, 5)</p> <p>Officer: Adil Rizvi - ptorep4@alhadi.com (Representative for grades: 10, 11, 12)</p> <p>Teachers' Representative: Sarwat Bangash - sbangash@alhadi.com</p> <p>Admin Representative: Selma Zaidi - selma.zaidi@alhadi.com</p>
--	--	--	---	---